

XGIMI PowerBase Stand for MoGo 4 Series

*Projector sold separately.

*Compatible only with XGIMI MoGo 4 series.





Exclusive Quick-Attach Design
Mount or Remove in Seconds



High-Capacity Battery
Double playtime

20000mAh



Innovative 2-in-1 Stand
(with Built-In Power Bank)



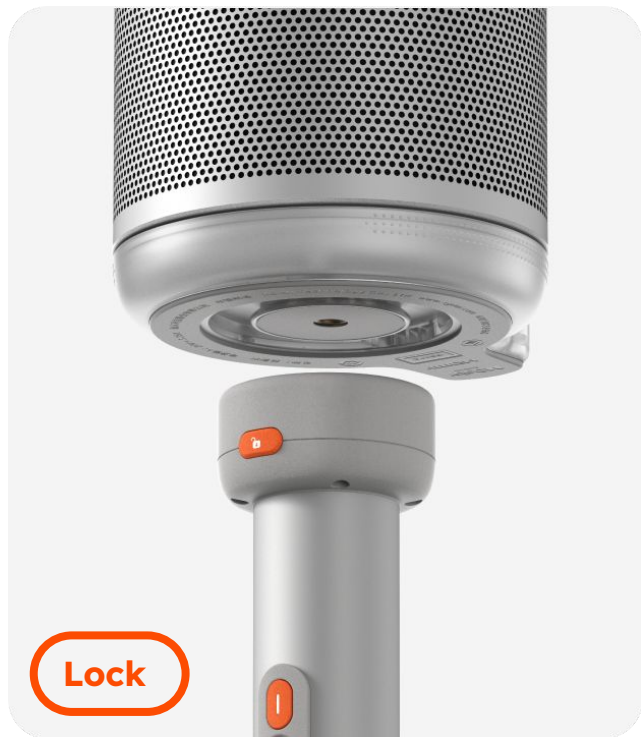
Lightweight

Portable

Stable



Quick-Attach Design
Mount or Remove in Seconds



- Press the stand's release button.
- Align the MoGo 4 base with the top of the stand.
- Press down and lock securely in place.



- To detach, simply press the stand's release button and remove the projector.

Built-In Power Bank Innovative 2-in-1 Stand

The PowerBase Stand combines the versatility of a floor stand with the longevity of a powerful battery, giving you a worry-free, big-screen viewing experience anytime, anywhere.



High-Capacity Battery

Hours of On-the-Go Entertainment

Watch an entire Hollywood blockbuster on a single charge. With the MoGo 4's built-in battery and the PowerBase stand's extra battery, enjoy double the playtime for back-to-back movies—double the power, double the fun.

5 H

Video Playtime (Eco Mode)*

12 H

Music Playtime*

65W

Power

20000 mAh

Large Capacity Battery*

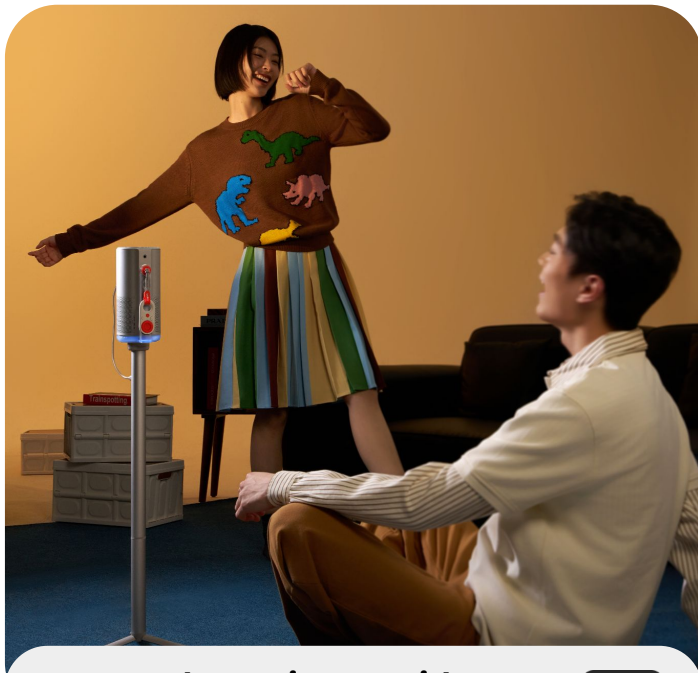
*Enjoy up to 5 hours of movie playback with both the MoGo 4 and PowerBase Stand fully charged.

*Stream music for up to 12 hours with all projector lighting features off and the volume level at or below 50%.



Switch Between Power Supplies

Keep the Fun Going Without Interruption



Power the Projector with the PowerBase Stand

Use the PowerBase Stand's charging cable (included) to supply power to MoGo 4. With both devices paired together, enjoy up to 5 hours of uninterrupted viewing.



Seamless Power Switching for Uninterrupted Playback

The adapter directly powers the projector when plugged in. Once unplugged, the projector automatically switches to the stand's power, ensuring uninterrupted projection.



Convenient Detachable Design **Lightweight, Portable, and Stable**

The PowerBase Stand separates into two pieces for easy transport in a backpack or bag, with each segment measuring just 43 cm or less. When movie time arrives, the stand re-assembles with a simple twist, and keeps the projection steady with its sturdy aluminum alloy construction.

43.0 cm / 16.9 in

Largest Section Length

68.3 cm / 26.9 in

Maximum Height

820 g / 1.8 lbs

Net Weight



More Details

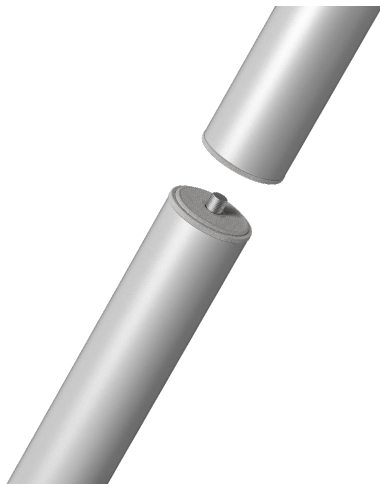
Smooth, Seamless Design

Two parts instantly become one with perfect alignment.



Durable Aluminum Alloy Body

Wear-resistant, corrosion-proof, and rust-free.

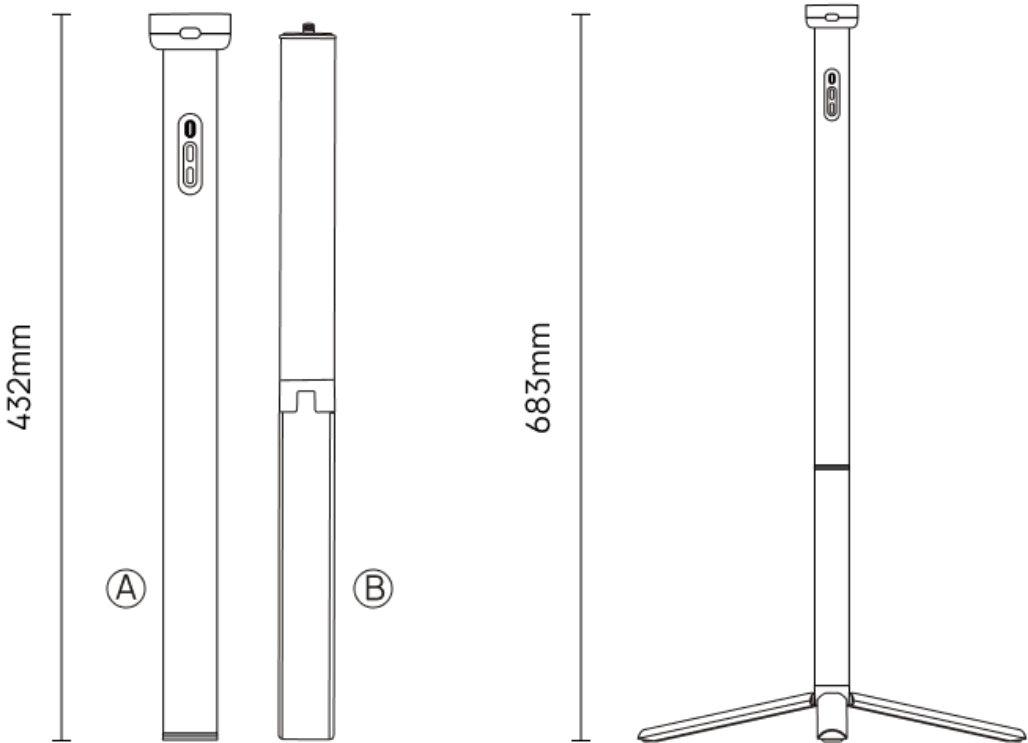


Stability for the Outdoors

Fold-out tripod base prevents tipping and falling on any terrain.



Product Dimensions



Product Notes

1. For best results, use the PowerBase Stand's native charging cable to power the MoGo 4 projector. Any third-party cables used must support a current of over 5A. Please ensure that the products you choose meet CCC safety certification standards.
2. To charge the PowerBase Stand, use the native power adapter provided by XGIMI. Any third-party adapters used must support the PD protocol and provide at least 65W of power output.
3. When connected to the PowerBase Stand, the MoGo 4 projector defaults to Standard Mode. In Standard Mode, the battery stand delivers up to 65W of power for optimal audio and visual performance.
4. Eco Mode can be manually enabled in system settings to extend battery life. Compared to Standard Mode, Eco Mode significantly increases playtime.
5. When powering non-XGIMI devices, the output is limited to 5V. Verify compatibility at [XGIMI.com](https://www.xgimi.com) or consult customer service.
6. If the XGIMI PowerBase stand's indicators do not turn on or it is not properly providing power, it may be in protection mode. Press and hold the battery check button for 5 seconds to reset.
7. If the product is not used for an extended period, keep the charge level between 20%-50% and store it in a cool, dry place to prolong battery life.

Product Specs

| | |
|--------------------------------|---|
| Product Name | XGIMI PowerBase Stand for MoGo 4 Series |
| Compatible Devices | MoGo 4, MoGo 4 Laser |
| Battery Capacity | 72Wh 20000mAh (3.6V 5000mAh x 4) |
| Rated Capacity | 3250mAh (20V/3.25A) |
| Port Specifications | USB-C Output x1, USB-C Input x1 |
| Main Materia | PC+ABS, Aluminum Alloy, Zinc Alloy, Silicone |
| Maximum Supported Weight | ≤1.5 kg |
| Product Dimensions (H x W x D) | 683 x 53 x 48 mm (Maximum height) 432 x 53 x 48 mm (Unit A) 410 x 32 x 32 mm (Unit B) |
| Product Weight | 0.82 kg |
| Package Dimensions (H x W x D) | 468 x 116 x 73 mm |
| Package Weight | 1.05 kg |
| What's in the Box | XGIMI PowerBase Stand for MoGo 4 Series, USB-C Charging Cable, User Manual |

XGIMI Magnetic Creative Filters (3-Pack)

*Compatible with XGIMI MoGo 4 series only



Ready-To-Go in 1 Second

All you need to do is simply snap the magnetic creative filter on top of the projector lens.



3 Creative Filters for Endless Vibes

Switch between Lunar, Ripple, and Dreamscape filters to suit your environment and your mood.



Switch Vibes with a Wave

Wave your hand in any direction within 30cm of the lens to change up the projected content.



Switch Vibes with the Remote

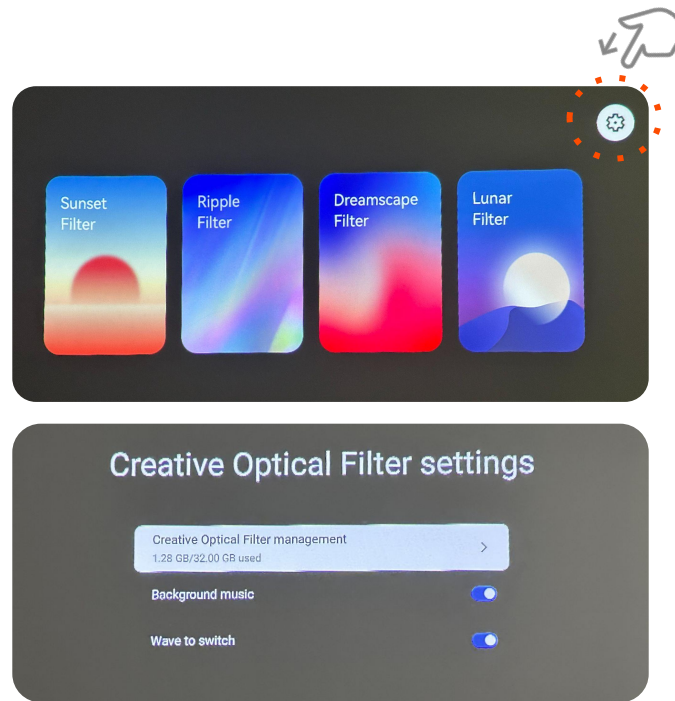
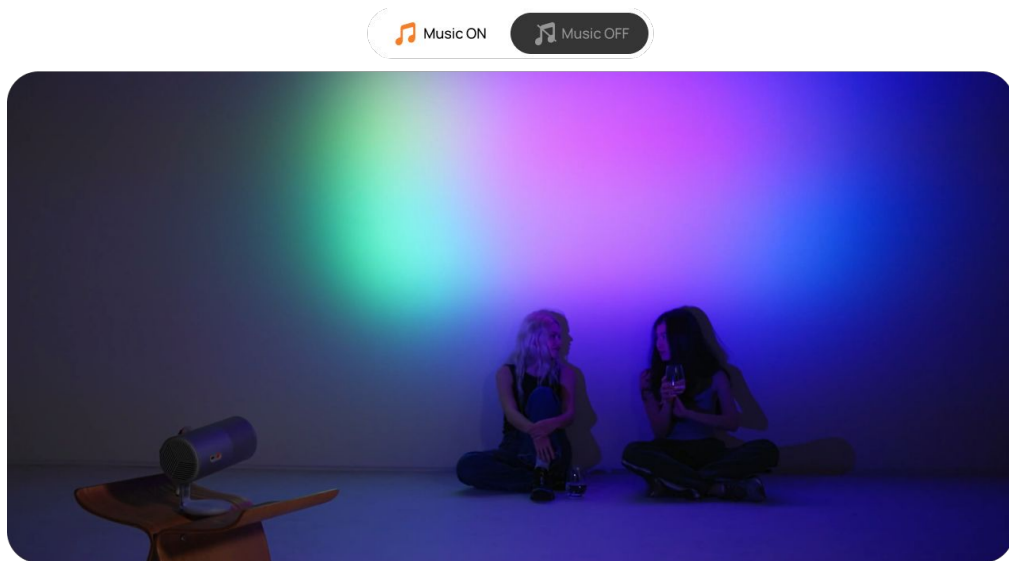
Toggle environments using the ←/→ buttons on the MoGo 4 remote control or mini remote.



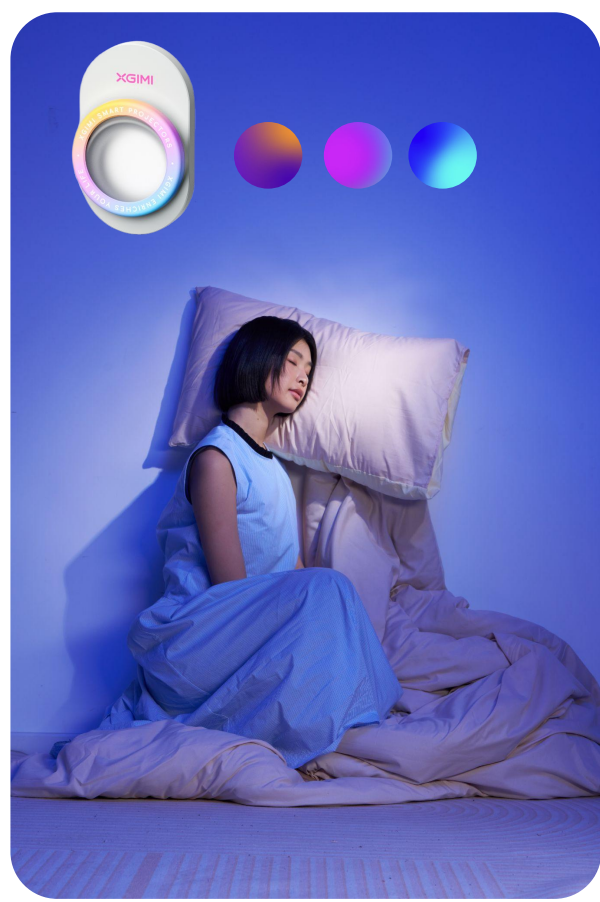
Tune In with Soothing Music

The Magnetic Creative Filter mode provides ambient background music to enhance the mood. For a personalized touch, connect via Bluetooth and play your own soundtrack for a truly immersive experience.

*(*Default background music can be turned off in Creative Filter App settings)*



More Vibes



Product Notes

1. The Magnetic Creative Filter is designed to enhance the ambiance. Blurred edges and distortion are normal effects during use. We do not recommend using it for watching movies.
2. For the optimal effect and experience, the Magnetic Creative Filters are best used in low-lit environments.
3. How to download the XGIMI Creative Filter app: select and download the app from the recommended applications page during the startup guide, or simply attach the Creative Filter, follow the pop-up prompt, then remove it to start the download.
4. Default background music can be turned off in XGIMI Creative Filter app settings.

Product Specs

| | |
|--------------------------------|--|
| Product Name | XGIMI Magnetic Creative Filter (3-Pack) |
| Compatible Devices | MoGo 4, MoGo 4 Laser |
| Product Weight | ABS, PMMA |
| Product Dimensions (H x W x D) | 76.3 x 46.8 x 37 mm (Lunar Filter) 76.3 x 46.8 x 16.4 mm (Ripple Filter, Dreamscape Filter) |
| Product Weight | 60 g (Lunar Filter) 30 g (Ripple Filter, Dreamscape Filter) |
| Package Dimensions (H x W x D) | 261 x 127 x 67 mm |
| Package Weight | TBD |
| What's in the Box | Lunar Filter*1, Ripple Filter*1, Dreamscape Filter*1, Storage Case*3, User Manual |