

# DYNAUDIO

## Legend

Product information | Technical specifications









---

# A new hero for your epics

Dynaudio Legend is the benchmark for luxury bookshelf speakers. It's been designed and hand-crafted with one purpose: to help you forget that time exists...

**W**hen we created Legend, we wanted it to surprise: to make you raise your eyebrows at such an immersive sound coming from something so little... and so perfect. We engineered it to entertain: to get you littering the floor with your entire vinyl collection (or hammering the bandwidth on your streamer).

And we built it to captivate: to make you want to just gaze at its rosewood cabinet, its subtle corners and its expert Danish craftsmanship.

Just like all great legends, this one will stay in your heart forever.

### **We all deserve nice things**

Listening to music you love puts you in a nice, liminal space. You're sitting in the moment, unplugged from the rest of the world. Your mind wanders – to the past, the future, the present. To no time at all. It's a 'hyggeligt' place to be.

If you've made a conscious choice to *actively do nothing*, you've made a conscious choice to do something nice for yourself; to be a bit selfish. Choose to be actively passive in front of a pair of Dynaudio Legend loudspeakers and you've also chosen to do it in style.

There's absolutely nothing wrong with that. In fact, you have our full-throated endorsement.

Every pair of Dynaudio Legend is unique. Yes, they all use the same high-quality parts; they all have the same astonishingly immersive, detailed and punchy sound; and they're all the same deliciously compact size. But they don't all look alike, and they don't all feel alike. Each pair has had its natural rosewood veneer panels selected and matched by eye, paired with Jatoba hardwood corner pieces that fit their colour tone, and assembled by hand at Dynaudio HQ in Denmark.

That means you'll have the only pair with that grain pattern and texture in the world. It's an unlimited limited edition – and yours is number one of one, no matter how many sets we make.

But Legend is more than just a pretty fascia. Look beyond that gorgeous veneer and those sublime corner details and you'll see the loudspeaker equivalent of a Formula 1 car.

Everything – from the Esotar 3 tweeter and the powerful precision mid/bass driver, to the crossover circuitry, the WBT NextGen terminals and even the dual-flared bass port – is designed for performance.

It's exactly the same stuff you'll find in our towering flagship hi-fi speakers, and even the professional reference systems that grace the likes of AIR Studios and Abbey Road in London – as well as thousands of other studios across the world.

Nothing has been trickled down here. It's literally the same components that have helped artists to win BAFTAs and Oscars.

If you can get your hands on either of those awards as well as a pair of Legend, you'll find that they all fit neatly into a standard bookshelf. (That was quite an exciting day in our product-design office.)

Unlike a Formula 1 car, Legend is easy to live with day-to-day. In fact, we've gone to a lot of effort to make sure it's living-room friendly; we know not all our speakers are (and not everyone wants that, believe it or not).

You can put these on regular speaker stands as part of a system that looks like a trolley-dash in a hi-fi warehouse, of course, but they'll be equally at home – and sound just as impressive – on a shelf or sideboard. Or hooked up to a streamer or your TV. You can put them with the woofer on top, or even on their sides, so they're exactly how you want.

Go and experiment. You have our permission.

### **Timeless**

Regardless of how you set it up, Legend delivers a performance that's genuinely surprising. And we really mean that: even our critically-eared Dynaudio Labs listening panel (who listen to every single prototype of every single speaker we produce) thought someone had hidden a subwoofer somewhere during their first showing in our test facility.

Couple that with Legend's enthralling clarity and sweet midrange, and that analytical test-run quickly turned into an extended, it-doesn't-matter-what-the-time-is-let's-just-play-another-song listening marathon.

Which is exactly what we hope it does for you, too.

**Positioning statement**

*Legend can be placed on its sides, or with its woofer on top for higher shelves*



# Honest Danish woodworking

**W**e spend more time perfecting Legend's cabinets than we do any other part of its construction. Some folk might say it's disproportionate; we know we wouldn't have it any other way.

Selecting the FSC-certified natural rosewood veneer panels is a big job. They have to be defect-free (yet full of personality). They have to be consistent in colour tone (but not *too* uniform). And they have to share visual chemistry with their companion Jatoba hardwood corners.

And if that isn't enough complexity for you, everything needs to be mirrored between the left and right speakers for a nice, symmetrical look.

This is all done by eye. There's no machine that has the taste to see what our craftsmen and women are looking for – and to be honest, even if such a machine *did* exist, we'd leave it for other companies to grapple with.

All the panels are numbered inside with 3D-engravings so nothing gets mixed up on the workbench and glued to the wrong parts. (Please don't do anything silly with your speakers to check this; you'll just have to take our word for it.)

Glueing the corners in place is the trickiest bit of all. It's so difficult that even our skilled workshop colleagues – some of whom have been building Dynaudio speakers for decades – all but begged us not to design Legend this way. But even though the process is full of muttering, painstaking tweaking and moderate profanity, it's a labour of love for them. They're proud.

We finish the speaker in two stages. First is an extremely thin layer that makes the wood fibres stand up. It's sanded smooth, then we put the top-coat on. It protects the surface and makes the grain really pop – but it doesn't hide the wood, either from your fingertips or your eyes. If we've done our job right, the whole thing should feel like we didn't do anything at all.



**The classic touch**

*Every Legend is handmade in Skanderborg, using time-honoured woodworking and finishing techniques*





# What do the reference-makers use as a reference?

**Y**ou know 'incredible' when you hear it. You just do. You get goosebumps on your arms, and your eyebrows shoot up. How can anything sound *this good*?

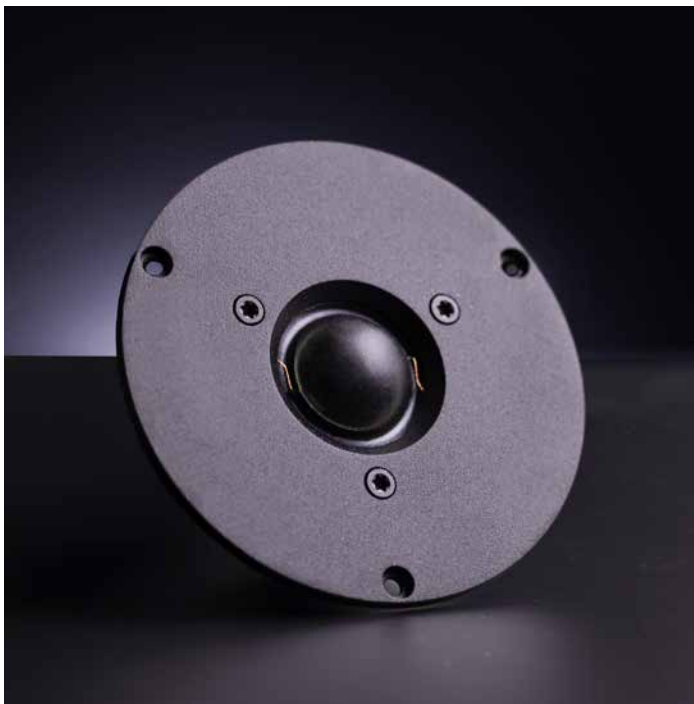
Esotar 3 is the best tweeter we've ever created, and to include it in Legend was a no-brainer. You'll also find it in our flagship Confidence family. It's in our limited-edition Heritage Collection speakers. It takes pride of place in the astonishing M-series speakers relied on by some of the world's most influential recording studios. It's one of the cornerstones of modern sound reproduction.

Sonic purity is difficult to replicate. While, on the face of it, Esotar 3 is a simple-looking 28mm soft-dome, there's a mind-boggling amount of stuff going on behind the scenes.

If you look at it in the right light, you'll spot the Hexis, which sits extremely close behind the diaphragm. Hexis is a dimpled inner dome that smooths out air movement and minimises unwanted resonance. For those of you who aren't acoustic engineers, that means you'll hear *less* of the tweeter. We don't mean it's quieter – it's just more effortless.

Further back, there are conduits and shaped vents to guide air even more precisely. A strong neodymium magnet and a lightweight aluminium voice-coil complete the picture.

And, perhaps weirdly for a speaker company, we're actually happy that you won't focus on any of it when you're listening. After all, who in their right mind listens to tweeters? It's the music they reproduce that makes your socks roll up and down.



# The hole truth about bass ports

**T**he interesting thing about bass ports – yes, there's an interesting thing about pass ports – is that they're interesting. They're one of the most heavily tuned, obsessed-over and argued-about parts of a loudspeaker.

A design slip-up here makes everything sound wrong – muddy, distorted and generally ill-defined – and can send less-experienced engineers on a wild goose chase involving redesigned crossovers, speaker-drivers and even cabinets.

Do it properly and bass, midrange and treble all slot and lock perfectly in place. Legend's port has been done properly.

It's been tuned specifically to work with a Legend mid/bass driver in a Legend cabinet with Legend-cabinet internal bracing and Legend damping material.

In that sense, it's more custom-designed than the Esotar 3 tweeter, which we don't redesign for every product it features in.

Legend's port is a tube with two flared ends (the other one is inside, right next to the back of the tweeter). The exact length and diameter of that tube, as well as the flareyness of the flares, are only arrived at after a long period of digital simulation, prototyping, listening, measurement and more listening.

The goal is to minimise distortion, weird air-movement noises (the scientific name for which is 'chuffing', yes really) and general flabbiness. Bass gets tighter, clearer and more musical. In your home, you can then dial-in how much you want by moving your speakers closer to a wall or using the supplied foam port plugs.

See? Told you ports were interesting.





# Our off-the-shelf parts are different...

**T**he term 'off the shelf' has negative connotations – and they're often justified. Generic parts (perhaps with a tweak or two) that are used to save time, money and, often, effort. Legend's mid/bass driver unit is off the shelf. The difference is, that shelf – and everything on it – was created from scratch in house.

This speaker driver is derived from the ones we use in our top-of-the-line studio reference speakers. (After all, if it's good enough for the people who create the music you listen to...) The only change is a different impedance to account for Legend's cabinet. That small tweak to an already bespoke part makes it behave in exactly the way we want it to for this speaker. And this speaker only.

Like all Dynaudio woofers since 1977, this one is made from Magnesium Silicate Polymer (or MSP). It's a material we developed ourselves, put on another often-visited shelf, and set about improving over the next half-century. MSP provides the right combination of lightness, stiffness and damping to give the magnet and voice-coil behind it total control over its movement. More control means more accuracy. More accuracy means better sound. And better sound means you'll have a bigger grin.

We work this way because each tiny improvement adds up to bigger leaps in what you hear. And it solves heaps of other problems before they even come up, as you'll see when you read about the crossover.

That shelf sounds pretty good now, doesn't it?

# The hidden beauty of the crossover

**L**et's just take a minute to look at it. It can't be helped, of course, but we think it's a shame that something so elegant must be hidden. (Even if the thing it's hidden in is every bit as delectable.)

Legend's crossover circuit takes the music signal coming from your amplifier, splits it into 'treble' and 'not-treble', then sends the two new signals to the tweeter and the woofer. That's it. That's all it does.

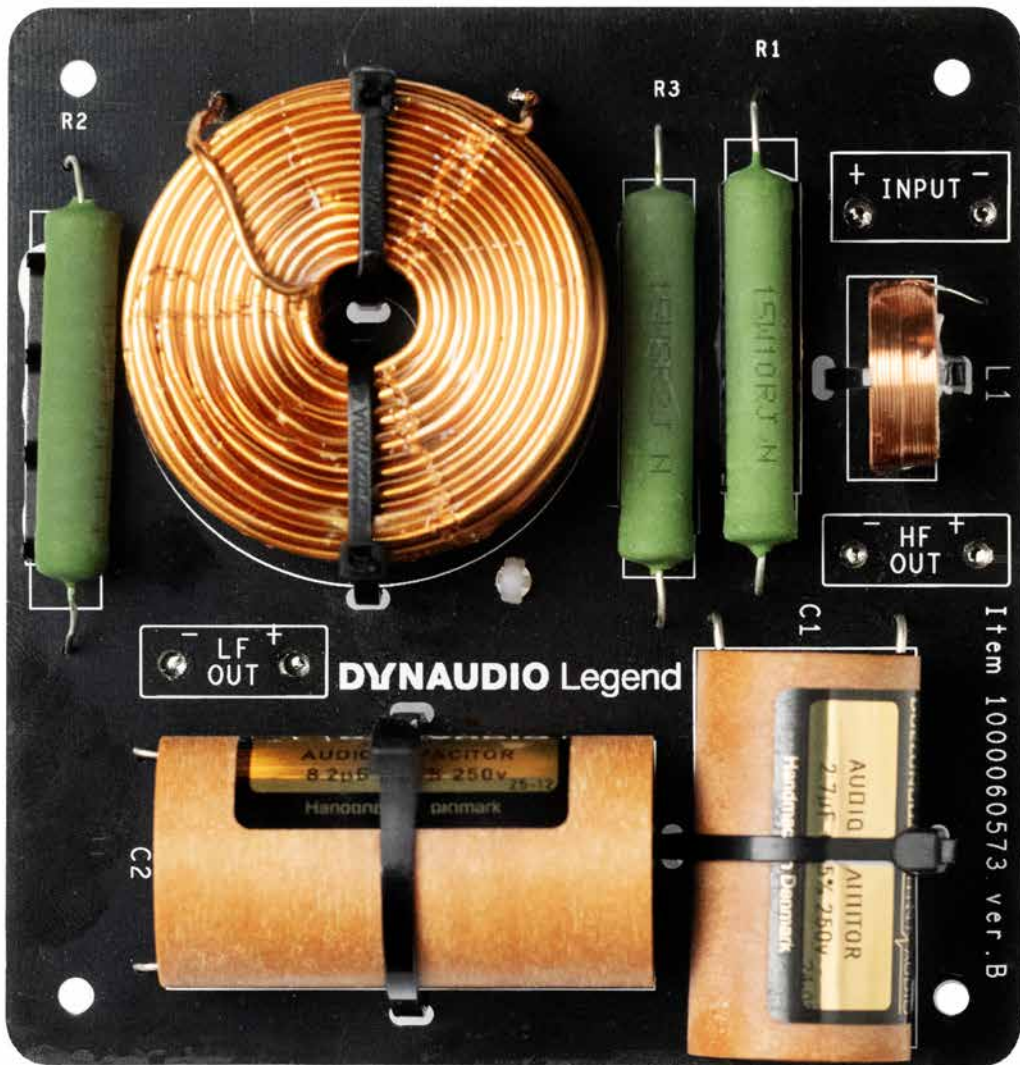
We don't need to use any elaborate electronic wizardry or extra components to compensate for foibles in driver or cabinet design, and we don't need to engineer our way into forcing the drivers to play frequencies they might not want to thanks to other bits of the design not playing ball.

That's because when you get everything else right, the crossover gets a lot easier to design.

This one uses capacitors from our friends at Duelund, near Copenhagen – plus air-core inductors and low-inductance wire-wound resistors. It's as simple as we could possibly make it, because the less there is of it, the more of the original musical signal gets through without alteration or degradation.

That simplicity even extends to how the components are laid out. Less wiring between them means shorter distances for signals to travel. And that means better performance.

So while you might not be able to see any of this ingenious engineering (and now you know why we think that's such a shame), you'll certainly hear it.



---

# Technical specifications



DYNAUDIO Legend  
Made in Denmark

www.dynaudio.com/contactus  
Sønderborgvej 15, DK-8660 Sønderborg





## Facts and figures

Everything you need to know  
about Dynaudio Legend



Sensitivity	83dB (2.83V/1m)
IEC long term power handling	150W
Impedance	6 Ohms
Frequency response (+/- 3dB)	60Hz – 28kHz
Box principle	Bass-reflex, rear-ported
Crossover	2-way
Crossover frequency	3500Hz
Crossover topology	2nd order
Woofer	1x 15cm MSP
Tweeter	28mm Esotar 3 with Hexis
Weight	6.34kg / 14lbs
Dimensions (W x H x D)	186 x 311 x 271mm / 7 1/8 x 12 1/4 x 10 5/8 in
Finish	Natural Rosewood



### **Handmade in Denmark**

Every pair of Dynaudio Legend is made in our factory in Skanderborg. We choose and match the natural rosewood panels by eye, so each pair is unique. And they're finished with the lightest touch – so you can feel the grain as well as see it.



### **Simplicity itself**

It's complicated to make something so simple. Thousands of hours of development went into creating a speaker that belies its compact size with such a captivating sound – one with no frills, that plays the music exactly as it was intended to be heard.



### **Classic Dynaudio technology**

The 28mm Esotar 3 soft-dome tweeter and our proprietary MSP (magnesium silicate polymer) 15cm mid-bass driver are hallmarks of a top-of-the-line Dynaudio speaker. We've also used stellar components where you can't see them, in the crossover and dual-flared bass port.



### **Timeless design**

Legend is based on some of our most revered speakers, including Compound and the mighty Consequence. You'll appreciate that legacy in the corner details (which are horrendously tricky to get right), in the beautiful finish... and in the listening. A pair of Legend will last for decades to come.







# DYNAUDIO Legend

Designed and engineered by  
Dynaudio Labs in Denmark

Learn more, read our reviews and find your nearest Dynaudio dealer at  
**dynaudio.com** and **facebook.com/dynaudiogroup** or **book your demo** here:



## Dynaudio A/S

8660 Skanderborg, Denmark  
[www.dynaudio.com](http://www.dynaudio.com)

Dynaudio Legend | Product magazine  
Item no. 46687316A

All text and image copyrights reserved.  
Subject to change without notice.